

# Building inclusive welfare systems: A dialogue between research and practice

*First EuroFlat Hotel , Brussels • June 5, 2014*

## The fight against poverty & social exclusion in times of crisis (COPE)

**Taking stock of Europe 2020:  
towards a multilevel, multi-stakeholder  
& integrated poverty arena?**

**Matteo Jessoula**

Department of Social and Political Sciences

University of Milan

Email: [matteo.jessoula@unimi.it](mailto:matteo.jessoula@unimi.it)



UNIVERSITÀ DEGLI STUDI DI MILANO

**COPE**

Combating Poverty in Europe

**Taking stock of Europe 2020:  
towards a multilevel, multi-stakeholder & integrated poverty arena?**

**Europe 2020 & the fight against poverty:  
premises & promises**

- After Lisbon & Social Inclusion OMC
- **EUROPE 2020 against poverty & social exclusion**

**Priority** “inclusive growth”

**Target** **Quantified poverty target: 20 mil. fewer people in poverty**

**Flagship** **European Platform Against Poverty & Social Exclusion**

**Approach** **(Formally) Integrated economic/social dimensions**

**Governance** The European Semester  
Partial abandonment of Social OMC (only peer-reviews)

# Taking stock of Europe 2020: towards a multilevel, multi-stakeholder & integrated poverty arena?

## Risk of poverty & social exclusion on the rise

Country	2006	2008	2010	2012
<b>EU 27</b>	<b>25,3</b>	<b>23,7</b>	<b>23,7</b>	<b>24,8</b>
BE	21,5	20,8	20,8	21,6
<b>BG</b>	<b>61,3</b>	<b>44,8</b>	<b>49,2</b>	<b>49,3</b>
CZ	18,0	15,3	14,4	15,4
DK	16,7	16,3	18,3	19,0
DE	20,2	20,1	19,7	19,6
EE	22,0	21,8	21,7	23,4
<b>IE</b>	<b>23,3</b>	<b>23,7</b>	<b>27,3</b>	<b>:</b>
<b>EL</b>	<b>29,3</b>	<b>28,1</b>	<b>27,7</b>	<b>34,6</b>
<b>ES</b>	<b>24,0</b>	<b>24,5</b>	<b>26,7</b>	<b>28,2</b>
FR	18,8	18,6	19,2	19,1
<b>IT</b>	<b>25,9</b>	<b>25,3</b>	<b>24,5</b>	<b>29,9</b>
LV	42,2	33,8	38,1	36,2
LT	35,9	27,6	33,4	32,5
HU	31,4	28,2	29,9	32,4
NL	16,0	14,9	15,1	15,0
AT	17,8	18,6	16,6	18,5
PL	39,5	30,5	27,8	26,7
PT	25,0	26,0	25,3	25,3
<b>RO</b>	<b>:</b>	<b>44,2</b>	<b>41,4</b>	<b>41,7</b>
SK	26,7	20,6	20,6	20,5
FI	17,1	17,4	16,9	17,2
SE	16,3	14,9	15,0	18,2
UK	23,7	23,2	23,2	24,1



## **Taking stock of Europe 2020: towards a multilevel, multi-stakeholder & integrated poverty arena?**

### **Key findings**

- **Europe 2020: a very weak start in 2011-12**
- ...then, actions at supranational level aimed to:  
**strengthen the anti-poverty dimension  
& reinforce governance**
- **Effects @ national level varied, but generally:**
  - **higher political salience of poverty and EU poverty target**
  - **increased participation, BUT  
it does not imply stronger influence on NRP drafting**
  - **cross policy integration absent**



# Taking stock of Europe 2020: towards a multilevel, multi-stakeholder & integrated poverty arena?

A very weak start, 2011/mid-2012

## Steering ability of EU institutions & national responses

- **Annual Growth Survey**

➔ 2011, poverty NOT among top priorities

- **National Reform Programs**

economic & fiscal consolidation measures predominant

- **National Poverty Targets**

➔ 10 MS used different poverty indicators from those agreed at the EU level  
BG, DE, DK, EE, FR, IE, LV, NL, SE, UK

- **Country Specific Recommendations**

3 only: Bulgaria Cyprus Estonia

- **European Platform Against Poverty**

➔ very limited staff; NOT integrated in the European Semester

**Taking stock of Europe 2020:  
towards a multilevel, multi-stakeholder & integrated poverty arena?**

**A very weak start, 2011-mid 2012**

**Multilevel interactions: Not effective**

**Stakeholder participation: Limited & mostly formal at supranational level**

Stakeholders dialogue meetings  
Annual Convention on Poverty

**Integration, Cross-policy sector: None**



# Taking stock of Europe 2020: towards a multilevel, multi-stakeholder & integrated poverty arena?

## Actions to strengthen the anti-poverty dimension & governance

### Steering ability of EU institutions

- **Annual Growth Survey**

2012-13-14: Tackling unemployment and the social consequences of the crisis

- **Country Specific Recommendations on Poverty**

2012 4 countries: BG, LV, LT, ES

2013 11 countries: BE, BG, ES, HU, IT, LT, LV, PL, RO, SK, UK

2014 12 countries: BG, ES, HR, HU, IE, IT, LT, LV, PL, PT, RO, UK

### 2013 Social Investment Package, link with Active Inclusion Strategy

2013 “Strengthening the Social Dimension of the EMU”

COM(2013) 690

2014 “Taking stock of the Europe 2020 strategy”

COM(2014) 130

### 2013 Key decisions: connecting EU2020 targets & European funds

*In MS, at least 20% of ESF ring-fenced to fight against poverty & social exclusion*

*New ex ante conditionality requirements for receiving ESF*



# Taking stock of Europe 2020: towards a multilevel, multi-stakeholder & integrated poverty arena?

## Effects @ the national level

### Participation

#### *Multi-stakeholder*

Reduced: SWE, UK

Increased: GER, POL, (ITA)  
BUT, limited relevance/influence

#### *Multilevel*

Very limited: SWE, (UK)

Increased: GER, POL, (ITA)  
BUT, limited relevance/influence

### Cross-policy Integration

Very limited, only Poland

NRP drafting centralized process led by Ministry of Finance



**Taking stock of Europe 2020:  
towards a multilevel, multi-stakeholder & integrated poverty arena?**

**Key messages for social stakeholders**

- AWARENESS** @ supranational, @ national, @ local level
- ALLIANCES** eg. Semester Alliance (Eapn & others) ...also @ national level
- PRESSURE** on supranational / national / institutions
- MOBILISE** create transversal networks (Ngos, political parties, experts)  
propose/support evidence based solutions



## Europe 2020: towards a multilevel, multi-stakeholder & integrated poverty arena?

### CSR on poverty – Italy

#### 2013

Ensure effectiveness of social transfers, notably through better targeting of benefits, especially for low-income households with children

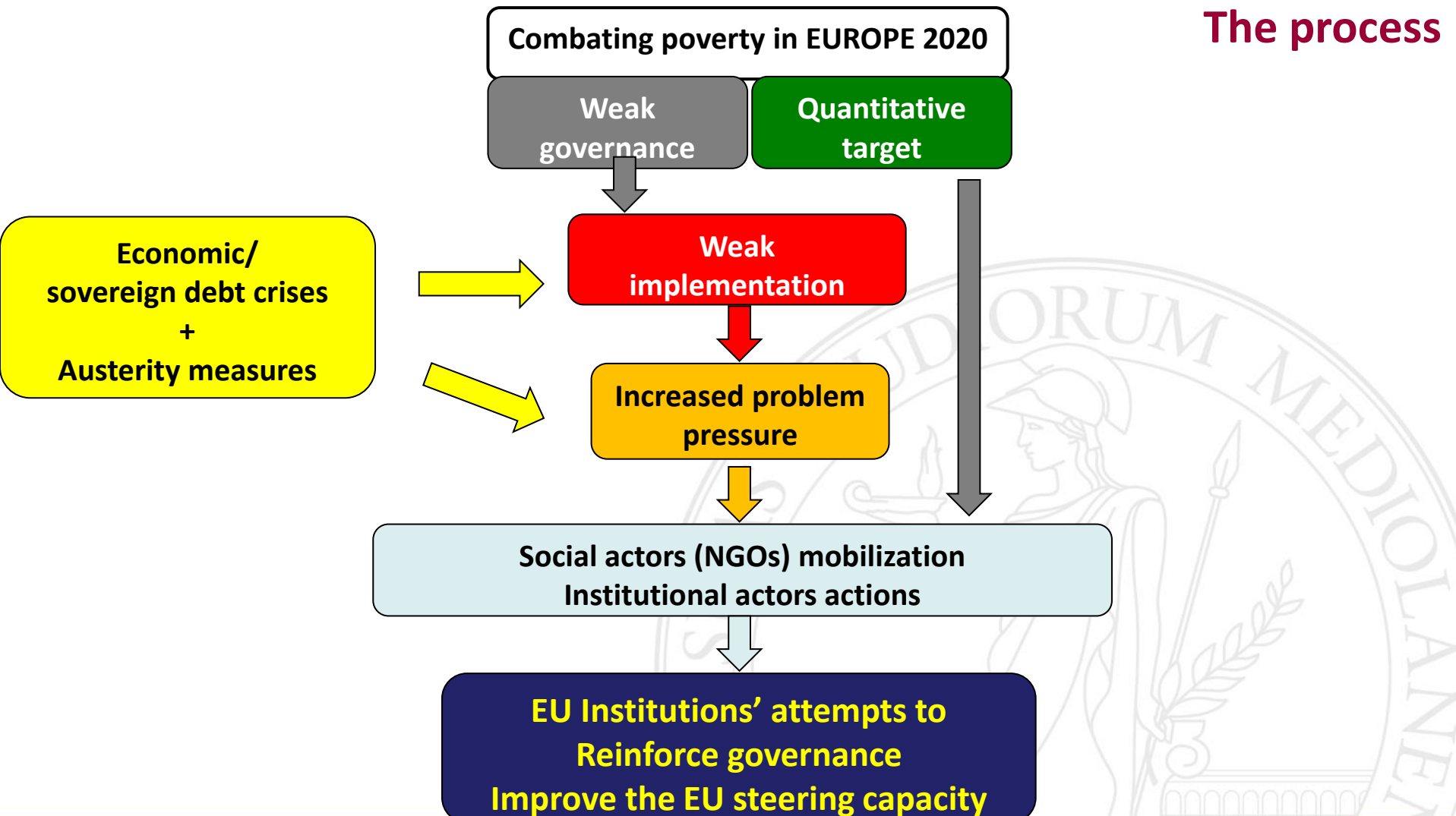
#### 2014

To address exposure to poverty and social exclusion, scale-up the pilot social assistance scheme, in a fiscally neutral way, guaranteeing appropriate targeting, strict conditionality and territorial uniformity, and strengthening the link with activation measures.

Improve the effectiveness of family support schemes and quality services favouring low income households with children

# Europe 2020: towards a multilevel, multi-stakeholder & integrated poverty arena?

## The process



# Europe 2020: towards a multilevel, multi-stakeholder & integrated poverty arena?

## Aim & Method

### AIM

Analyzing the implementation of EU2020 in the first three cycles 2011-13

### METHOD

Qualitative research: Document analysis  
17 Interviews at supranational level  
(75 Interviews at national level: Ger, Ita, Pol, Sw, UK)

### 3 ANALYTICAL DIMENSIONS

- Effective interaction between different levels of government
- Steering ability of EU bodies – European Commission/EPAP
- Stakeholder involvement at various level of government